



# Azure Solutions Guide

---



# Contents

Introducing Microsoft Azure	3
The Imperative of Cloud Migration: A shifting business landscape	5
A quick guide to Azure's key solutions	8
Microsoft Azure Solution Assessments	15
Smooth migrations: Five simple steps	18
Consult with an Azure expert	21



01



# Introducing Microsoft Azure

## **When it comes to the cloud computing, Microsoft Azure stands as a leader in providing an extensive suite of services that encompass everything from storage solutions and networking to complex analytics**

Azure supports an array of programming languages, frameworks, and operating systems, offering flexibility and compatibility to seamlessly integrate with existing IT environments and maximise the innovative solutions.

### **The evolution of cloud computing**

The shift from traditional, on-premises IT infrastructure to cloud-based services represents one of the most significant transformations to ever take place. Microsoft Azure has been instrumental in this evolution, offering scalable and flexible cloud computing solutions that adapt to the ever-changing needs of businesses around the world. Innovations such as AI and machine learning integrations, IoT capabilities, and robust cybersecurity measures highlight Azure's role in advancing cloud technology.





## 02



The imperative of Cloud Migration:

# A shifting business landscape

## **On a regular basis, businesses face unpredicted and sometimes unprecedented challenges that demand rapid adaptability and resilience.**

As digital transformation reshapes industries, cloud technology becomes a critical enabler. Microsoft Azure provides the necessary tools and capabilities to ensure that businesses are not only equipped to handle the present but are also future-ready. Leveraging Azure's comprehensive cloud solutions will empower businesses to respond swiftly to market changes, optimise operations, innovate continuously, and much more.

### **The benefits of cloud migration**

Migrating to Azure unlocks a host of strategic advantages essential for modern business operations, including:

#### **Improved security**

Azure's built-in security features provide robust protection at every layer of a cloud environment. From identity and access management to threat intelligence and behavioural analytics, Azure ensures that infrastructure and data are shielded against the latest security threats. Regular updates and compliance with international cybersecurity standards further enhance defences, making Azure a safe fortress to protect business systems and solutions.

#### **Flexibility and scalability**

Azure allows businesses to adapt to changing business needs with ease. Whether scaling up during peak periods or scaling down to reduce costs, Azure's elastic services allows businesses to adjust resources instantly without compromising performance or security. This flexibility supports business growth and operational efficiency, enabling innovation without limits.

## Compliance and governance

Azure simplifies compliance, offering an extensive array of certifications and policies that adhere to regional and global standards. Irrespective of industry, Azure provides tools to manage compliance effectively, reducing the risk and complexity of regulatory requirements.

## Cost efficiency

Azure helps optimise IT spending with a pay-as-you-go pricing model, which means businesses only pay for what they use. This can significantly reduce operational costs, eliminating the need for upfront hardware investments and reducing the maintenance costs associated with traditional IT infrastructure. Additionally, Azure offers tools to monitor and manage cloud spend, helping businesses to stay on budget and allocate resources more effectively.

## Control and visibility

With Azure's sophisticated management tools, businesses gain unparalleled control over their cloud infrastructure and can monitor, manage, and analyse cloud resources with ease using Azure's dashboard and analytics services. These tools provide actionable insights into resource utilisation, system performance, and operational health, enabling proactive management and optimisation of their cloud environment.

## Innovation enabler

Azure accelerates a business' ability to innovate by providing instant access to a range of technologies including AI, machine learning, Internet of Things (IoT), and more. Businesses can integrate new technologies seamlessly into their processes to drive product innovation, improve customer experiences, and create new business models. Azure's global network of data centres also ensures that they have the performance and speed to innovate at scale.

By embracing Azure, businesses can transform their operational model to be more agile, secure, and efficient, positioning themselves for success in a rapidly evolving digital landscape. The flexibility, comprehensive security measures, and robust scalability provided by Azure make it an indispensable tool for businesses aiming to thrive in the future.

## 03



## A quick guide to Azure's key solutions

Here, we give a whistle-stop tour of some of Azure's most commonly accessed solutions that can transform any business environment.

# 01

## Azure Virtual Desktop (AVD)

### What is AVD?

Azure Virtual Desktop is a comprehensive desktop and app virtualisation service hosted in the cloud. It allows employees to access their desktops and select businesses applications securely from any location, on any device. This flexibility is crucial for supporting modern, remote, or hybrid work models.

### Business benefits

#### Remote work enablement

AVD facilitates a seamless remote working experience, ensuring employees remain productive and engaged regardless of their location.

#### Cost reduction

By virtualising desktops and applications, businesses can significantly reduce the costs (and time) associated with hardware updates and IT maintenance.

#### Enhanced security

Centralised data and applications mean sensitive information stays within the Azure security perimeter, reducing the risk of data breaches associated with end-user devices.

### Implementation highlights

Setting up AVD is streamlined and user-friendly. Businesses can deploy a full virtual desktop experience with applications specific to user needs in a few simple steps. Integration with existing Azure and Microsoft 365 services ensures a cohesive management experience, leveraging Azure's security and management protocols.

# 02

## Azure Cloud Migration

### **Necessity of Cloud Migration**

As technology evolves, maintaining legacy systems and outdated infrastructure can hinder business growth and expose organisations to security vulnerabilities. Azure Cloud Migration offers a pathway to modernising infrastructure, ensuring businesses stay agile and competitive.

### **Overcoming challenges**

#### **Outdated infrastructure**

Azure provides tools to seamlessly transition from aging infrastructures to advanced cloud solutions, enhancing performance and security.

#### **Cost management**

Businesses can migrate to a cost-effective model with Azure's scalable services that adjust to business needs, helping manage expenditures without compromising on capability or performance.

### **Business benefits**

#### **Enhanced security**

Protect applications and data with Azure's built-in security features. .

#### **Application modernisation**

Utilising Azure's cloud-native technologies, businesses can innovate and improve applications, driving greater business value.



# 03

## Azure Backup

### The importance of data backup

With businesses reliant on data for their everyday operations, losing critical business data can be catastrophic. Azure Backup offers a reliable, secure, and cost-effective cloud-based backup solution, ensuring data integrity and availability when needed.

### Business benefits

#### Simplified data protection

Businesses can automate backup processes and manage them from a unified Azure management console.

#### Reliable recovery

Quickly restore data in the event of hardware failures, human error, or cyber-attacks.

#### Ease of use

Azure Backup is simple to implement and requires minimal upkeep, allowing IT teams to focus on their core roles. The service integrates smoothly with existing IT environments, supporting a wide range of operating systems and enterprise applications.

# 04

## Azure Site Recovery

### Business continuity planning

Maintain operational continuity with Azure Site Recovery, an essential service that ensures business operations can continue by quickly recovering from outages.

### Business benefits

#### Rapid recovery

Implement automated recovery protocols that are not only fast but also tailored to meet specific operational needs.

#### Cost-effectiveness

Avoid the expense of secondary infrastructure by leveraging Azure's cloud environment for disaster recovery.



# 05

## Azure SQL Managed Instance

### Seamless database management

Azure SQL Managed Instance allows for the easy migration of SQL Server databases to the cloud with minimal application changes, offering full SQL Server compatibility with the operational and financial benefits of an intelligent, fully managed service.

### Business benefits

#### Performance consistency

Achieve near-complete compatibility with the latest SQL Server, ensuring minimal disruption while transitioning to a fully managed platform.

#### Cost-efficiency

Optimise costs with a managed database service that reduces the need for in-house database management resources.



# 06

## Windows Server on Azure

### Leveraging Windows Server on Azure

Running Windows Server on Azure allows businesses to utilise the robust capabilities of Windows Server while benefiting from Azure's scalability, security, and hybrid capabilities.

### Business benefits

#### Scalability and flexibility

Businesses can scale their server needs based on business demands quickly and efficiently.

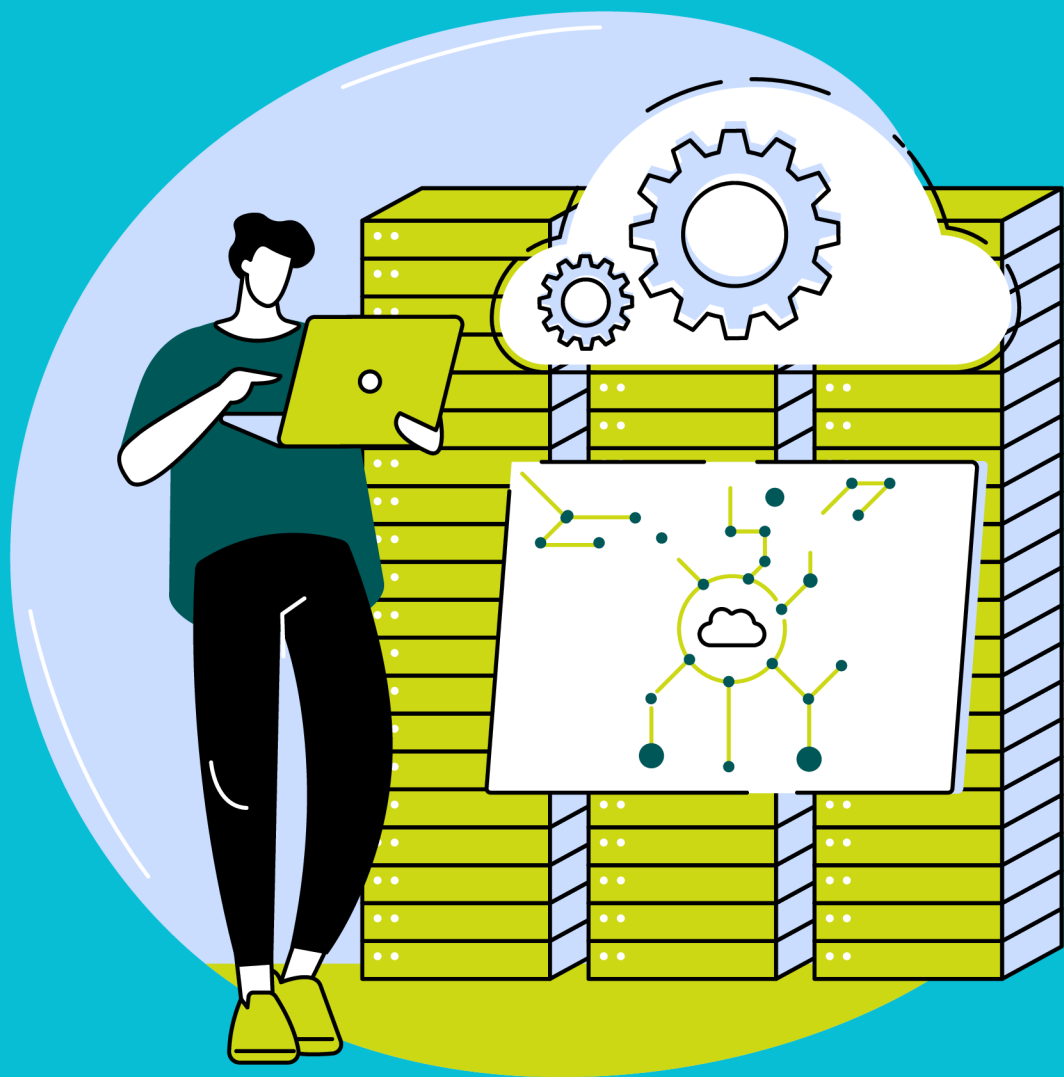
#### Advanced security

Businesses can benefit from Azure's built-in security and management features while operating familiar Windows Server environments.





04



# Microsoft Azure Solution Assessments

**To maximise the benefits of the cloud, businesses need robust planning, continuous monitoring, and effective management. Microsoft Solution Assessments are a comprehensive set of evaluations designed to help businesses understand their current IT environment and identify opportunities for improvement and optimisation.**

They help measure progress by establishing a utilisation baseline to track and achieve milestones, using custom migration plans.

These assessments are based on industry best practices and incorporate proven strategies for managing and optimising an organisation's IT assets. They support customers' journeys to the cloud, helping to streamline operations, increase productivity, and control costs.

## **4 pillars of assessment**

### **01. Assess and discovery**

Gather accurate data from the IT environment, including real-time details and identification of cloud transition blockers.

### **02. Plan and Decide**

Determine top priority changes by understanding how cloud-based scalability can increase agility and identify opportunities for improving business processes.

### **03. Migrate**

Develop a roadmap for the cloud journey with a cost analysis of migration to the cloud. Prioritise end users' tools and business apps for transition to the cloud.

### **04. Optimise**

Help measure progress by establishing a utilisation baseline to track and achieve milestones, using custom migration plans



## Two Azure Assessments

### Rapid Azure Migration Assessment



Provides Microsoft customers with server Rapid Azure Migration Assessments that can help drive customer migrations, either through the use of built-in reports to support rapid Windows and SQL Server migrations or as a foundation for a deep-dive analysis.

#### Assessment Criteria

Must have more than 15 virtual servers.

#### Assessment Tool

Assessment uses Azure Migrate.

#### Timeline

2-3 weeks total estimate from nomination to report delivery

### Rapid Security Assessment



Provide Microsoft customers with Rapid Security Assessments that can help drive data-driven implementations of security policies, procedures, and tools using built-in reports to support migration plans to improve security based on CIS Controls and the Zero Trust framework.

#### Assessment Criteria

Must have more than 30 users and 15 virtual servers.

#### Assessment Tool

Assessment uses CSAT Quick Scan.

#### Timeline

2-3 weeks total estimate from nomination to report delivery

05



Smooth migration:  
Five simple steps

1

## Initial assessment

### Evaluate current infrastructure

Businesses should conduct a thorough assessment of their current IT environment to understand the scope of migration.

### Define business objectives

Business goals for migrating to Azure should be clearly defined, with success metrics associated. These might include increasing scalability, enhancing security, reducing costs, or improving disaster recovery capabilities.

2

## Planning

### Select migration strategy

Choose an appropriate migration strategy (rehost, refactor, rearchitect, or rebuild) based on the complexity of applications and business requirements.

### Develop a project plan

Create a detailed migration plan that includes timelines, resources, roles, and responsibilities. Ensure all stakeholders are aligned with the migration process.

3

## Proof of concept

### Test the plan

Businesses should implement a pilot migration with a small, non-critical segment of their IT environment. This helps identify potential issues without impacting business critical operations.

### Adjust based on feedback

Use the insights gained from the pilot to refine the migration strategy and plan.

4

## Execution

### Migrate workloads

Begin the migration of applications, data, and workloads based on the refined plan.

### Monitor and optimise

Continuously monitor the migration process for any operational issues and optimise resources to ensure efficiency and performance.

5

## Post-migration review

### Validate and tweak

Once the migration is complete, conduct a thorough review to ensure all systems are functioning optimally in their new environment. Use Azure Monitor and Azure Advisor to help optimise performance and costs.

### Develop a project plan

Create a detailed migration plan that includes timelines, resources, roles, and responsibilities. Ensure all stakeholders are aligned with the migration process.



## Consult with an Azure expert

The value of consulting with Azure-certified experts like us can significantly enhance the success of a business' migration. We bring a wealth of experience and a deep understanding of Azure to ensure that any data or solution migrations are smooth and aligns with strategic business objectives.

### Why partner with us?

#### Expert guidance

Our azure specialists provide expert advice tailored to specific business needs, helping to navigate complex migration challenges.

#### Customised solutions for your business

Leveraging our extensive experience, we can offer customised solutions that optimise cloud operations and cost-efficiency.

#### Support throughout the journey

From initial assessment through to post-migration optimisation, we support every phase of the journey, ensuring that businesses reap the full benefits of Azure.







## Are you ready to transform your business with Azure?

It's time to partner with us, your trusted Azure expert, to ensure a seamless and successful migration to the cloud. Contact us today to start your journey and unlock the full potential of Microsoft Azure for your business. Access unparalleled expertise and support every step of the way.

### Get in touch



[sales@bom.co.uk](mailto:sales@bom.co.uk)



0800 038 7222

Azure Solutions Guide